

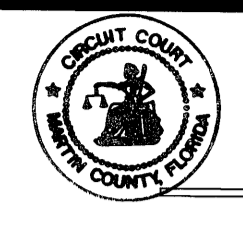
JENSEN PARK ESTATES PHASE FOUR

A Subdivision Located In Section 28, Township 37 South, Range 41 East, Martin County, Florida

Pinecrest Lakes Phase VI

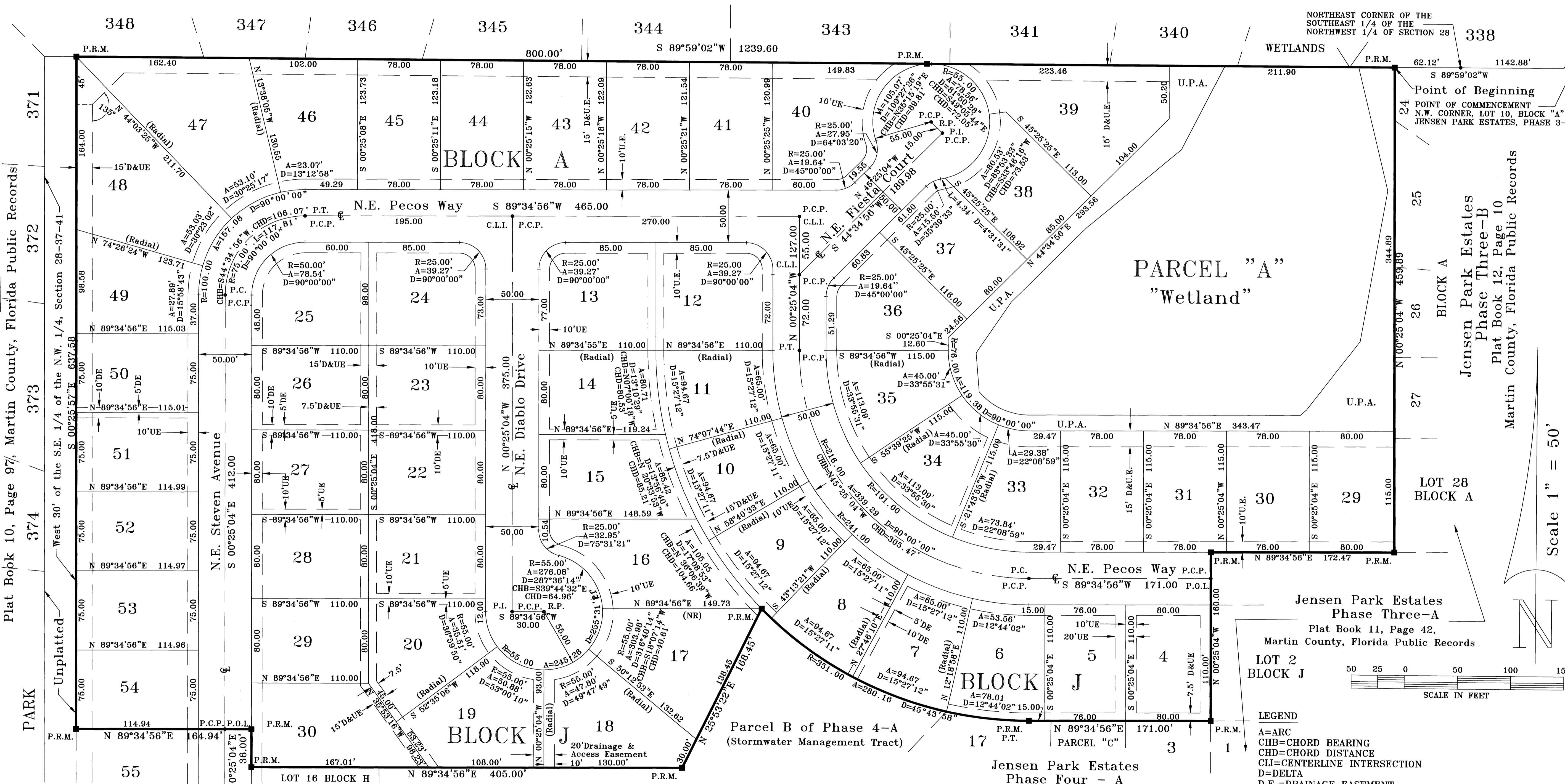
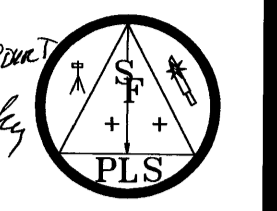
Plat Book 10, Page 60, Martin County, Florida Public Records

LOT 10 BLOCK A
JENSEN PARK ESTATES
PHASE THREE - A



Filed for Record this 20th day of Nov, 1998
in Plat Book 14, Page 59, Public Records
of Martin Co. Florida

MARKA ST. HOK
CLERK OF RECORDS
Charlotte Budy
24



Pinecrest Lakes Phase VII
Plat Book 10, Page 97, Martin County, Florida Public Records

NORTHEAST CORNER OF THE
SOUTHEAST 1/4 OF THE
NORTHWEST 1/4 OF SECTION 28

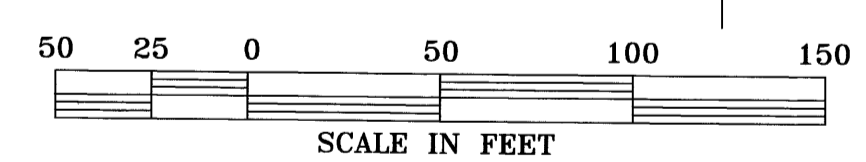
Point of Beginning
N.W. CORNER, LOT 10, BLOCK "A"
JENSEN PARK ESTATES, PHASE 3-A

PARCEL "A"
"Wetland"

LOT 28
BLOCK A

Jensen Park Estates
Phase Three-A
Plat Book 11, Page 42,
Martin County, Florida Public Records

LOT 2
BLOCK J



- LEGEND**
- A=ARC
 - CHB=CHORD BEARING
 - CHD=CHORD DISTANCE
 - CLI=CENTERLINE INTERSECTION
 - D=DELTA
 - D.E.=DRAINAGE EASEMENT
 - D.&U.E.=DRAINAGE & UTILITY EASEMENT
 - D.M.E.=DRAINAGE & MAINTENANCE EASEMENT
 - P.C.=POINT OF CURVATURE
 - P.C.C.=POINT OF COMPOUND CURVATURE
 - P.I.=POINT OF INTERSECTION
 - P.R.C.=POINT OF REVERSE CURVATURE
 - P.T.=POINT OF TANGENCY
 - P.O.L.=POINT ON LINE
 - R=RADIUS
 - R.P.=RADIUS POINT
 - U.E.=UTILITY EASEMENT
 - U.P.A.=UPLAND PRESERVE AREA
 - =SET PERMANENT REFERENCE MONUMENT P.L.S. NO. 4557
 - =SET PERMANENT CONTROL POINT P.L.S. NO. 4557

GENERAL NOTES

BLOCK A
Jensen Park Estates Phase Four - A
Plat Book ____, Page ____, Martin County, Florida Public Records

1. A search of the public records has not been done by this office.
2. Bearings shown hereon are assumed on the North line of the South half of the Northeast quarter of said Section 28 and all bearings are relative thereto.
3. There shall be no building or any other kind of construction or trees or shrubs placed on drainage easements.
4. There shall be no building or permanent structures placed on utility easements
5. Property lies in flood zone "B", as shown on FEMA/FIRM map numbers 12061 0151 C printed 1/5/1984.
6. "This plat, as recorded in its original form in the public records, is the official depiction of the subdivided lands described hereon and will in no circumstances be supplanted in authority by any other form of the plat, whether graphic or digital."
7. = Control of Access - No vehicular access without the approval of the Board of Martin County Commissioners.
8. Development shall comply with Article 3, LDR Zoning in Section 3.7 of the Martin County Code of Laws and Ordinances.

THERE MAY BE ADDITIONAL RESTRICTIONS THAT ARE NOT RECORDED ON THIS PLAT THAT MAY BE FOUND IN THE PUBLIC RECORDS OF THIS COUNTY.

SOUTH FLORIDA
PROFESSIONAL LAND SURVEYORS
2325 N.E. Dixie Highway - Jensen Beach, Florida 34957
VOICE (561) 334-1800 VOICE (561) 334-8772
FAX (561) 334-2584

REVISIONS	No.	DESCRIPTION	DATE	BY
	1			
	2			
	3			
	4			
	5			

DRAWN BY: Peter Freytag
DATE DRAWN: 12/12/97
DATE IN FIELD:
FIELD BOOK:
SCALE: 1" = 50'
CHECKED BY: T.L.M.

JOB NUMBER
96-412

SHEET
3
OF
3